

GRAND MERCURE

成都东部美爵酒店

CHENGDU EAST



PROUDLY LOCAL

LOCATION

- 5-minute by walk to Sancha Metro Station
- 13-minute to Tianfu International Airport by Metro 18
- 25-minute to Tianfu International Airport by car
- 10-minute to Maanshan Viewing Platform by car
- 18-minute to Longquan Forest Mountain Urban Park by car
- 20-minute to Western China International Expo City by metro
- 34-minute to South Railway Station by metro
- 45-minute to Tianfu Squal by metro



GRAND MERCURE

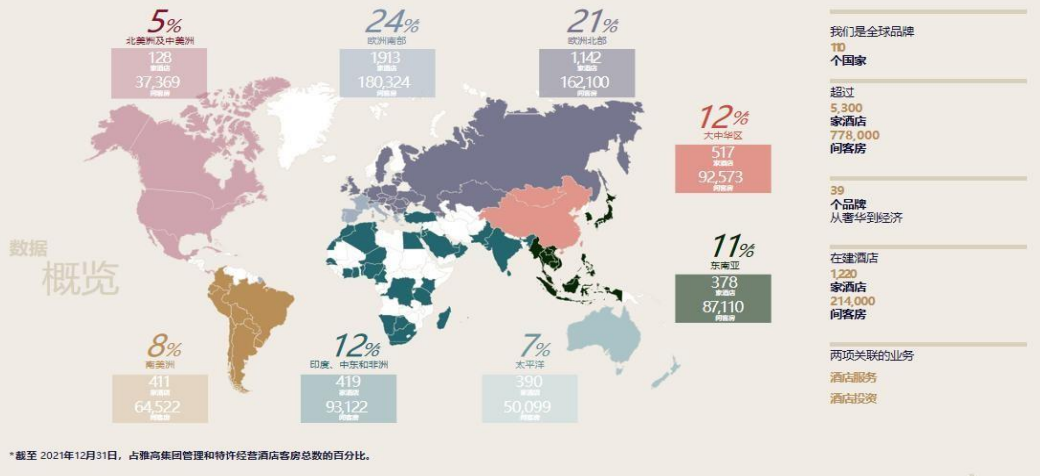
成都东部美爵酒店
CHENGDU EAST

BRAND

The Grand Mercure Chengdu East is a high-end hotel owned by Accor Hotels in France which was founded in **1967**. It has a series of distinctive international hotel brands in the world with 4,800 hotels and 280,000 employees in 100 countries on five continents about 704,000 rooms to meet the needs of different customers.

雅高全球

全球酒店运营商



ALL ACCOR
LIVE
LIMITLESS

Luxury

RAFFLES

LEGEND

BANYAN TREE

Fairmont

SO

SOFITEL

Premium

M

PULLMAN

swissôtel

ANGSANA

GRAND MERCURE

THE SEBEL

MÖVENPICK

Midscale

NOVOTEL

Mercure

Economy

ibis

ibis
STYLES

Lifestyle

TRIBE

GRAND MERCURE

成都东部美爵酒店
CHENGDU EAST

HOTEL BRIEF

Hotel construction area of about 35,000 m² design style from the French retro elegance, the use of turquoise embellished champagne gold tone, to create a hidden luxury urban atmosphere.

The hotel also integrates Sichuan culture and Shu style into the architectural texture, echoing Mercure's brand characteristics Proudly Local.



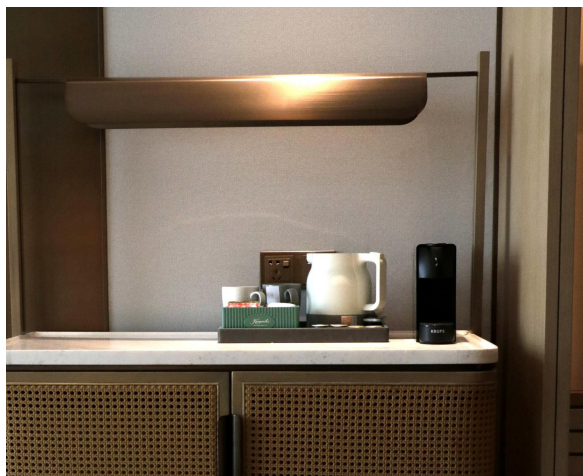
GRAND MERCURE

成都东部美爵酒店
CHENGDU EAST

GUEST
ROOMS

346 UNITS

- 81 Superior King Room (35-40m²)
- 103 Superior Twin Room (35-40m²)
- 34 Apartment King Room (35-50m²)
- 8 Apartment Twin Room (40m²)
- 34 Executive King Room (35-40m²)
- 32 Executive Twin Room (35-40m²)
- 25 Deluxe King Room (45-50m²)
- 8 Executive Deluxe King Room (45-50m²)
- 2 Junior Suite (65m²)
- 15 Superior Suite (82m²)
- 1 Deluxe Suite (100m²)
- 3 Executive Suite (160-170m²)



GRAND MERCURE

成都东部美爵酒店
CHENGDU EAST

MEETING
ROOMS

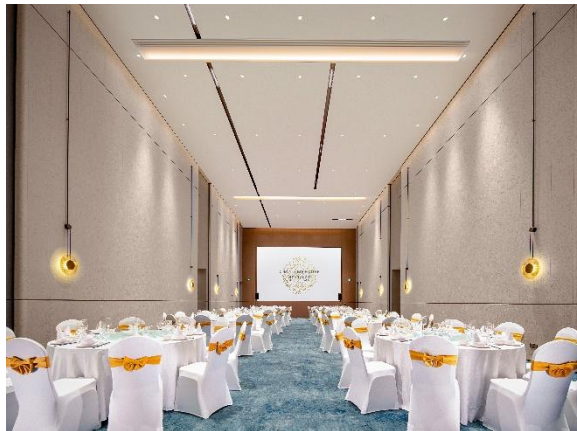
GRAND MERCURE

成都东部美爵酒店
CHENGDU EAST

MEETING ROOMS

The hotel is equipped with a large pillar-less conference center, and multi-functional conference venues are suitable for conferences, banquets and other types of promotion exhibitions to meet diversified business needs.

It includes a conference center that can accommodate **800** people, 8 multi-function flexible sub-venues, 1 multi-function ballroom, 4 multi-function meeting rooms, 300 m² of pillar-free multi-function ballroom with high-definition display screens.



GRAND MERCURE

成都东部美爵酒店
CHENGDU EAST

	Meeting Room Information						Capacity					
No.	Meeting Room Name	Acreage (m²)	Length (m²)	Width (m²)	Height (m)	Floor	ClassRoom (pax)	Theater (pax)	U Shape (pax)	Round Table (pax)	Standing Cocktail (pax)	Boardroom (pax)
1	Yinxing (Equally divided into three)	885	38.5	23	10	1F	590	800	240	450	1000	280
2	Liusu (Equally divided into two)	197	15.8	12.5	4	1F	90	160	50	90	200	40
3	Runnan (Equally divided into two)	186	15.8	11.8	4	1F	80	150	45	90	200	35
4	Haitang (Equally divided into two)	197	15.8	12.5	4	2F	90	160	50	90	200	40
5	Furong (Equally divided into two)	186	15.8	11.8	4	2F	80	150	45	90	200	35
6	Grand • Ballromm	300	25	12	9	2F	120	200	80	120	200	60
7	Shuishan	66	10	6.6	4	2F	30	50	25	30	50	30
8	Taoyuan	91	13.8	6.6	4	2F	/	/	/	/	/	20
9	Xuesong	63	9.58	6.6	4	2F	30	50	25	30	50	20
10	Zhuzhi	63	9.58	6.6	4	2F	30	50	25	30	50	20



GRAND MERCURE

成都东部美爵酒店
CHENGDU EAST

F&B

GRAND MERCURE

成都东部美爵酒店
CHENGDU EAST

F&B

Grand Mercure Chengdu East's
dining concept focuses on
"Tea Culture,"
"Local Snacks,"
and "Specialty Dishes,"
offering guests an unforgettable
culinary journey.



GRAND MERCURE

成都东部美爵酒店
CHENGDU EAST

JIN LAN

The Jinlan Chinese Restaurant features a fusion of Sichuan and Cantonese cuisines, with a dining area for 30 people and 10 private Chinese dining rooms ranging from 60 to 120 m², providing business travelers a luxurious and homely dining experience.

1-2 Floor

Operation Hour

11: 30 – 14: 00

17: 30 – 21: 30



GRAND MERCURE

成都东部美爵酒店
CHENGDU EAST

LILLE CAFE

The Lille Café can accommodate up to 160 people and offers a selection of western-style a la carte dishes and distinctive buffet options.

1 Floor

Operation Hour

6: 30 – 22: 00

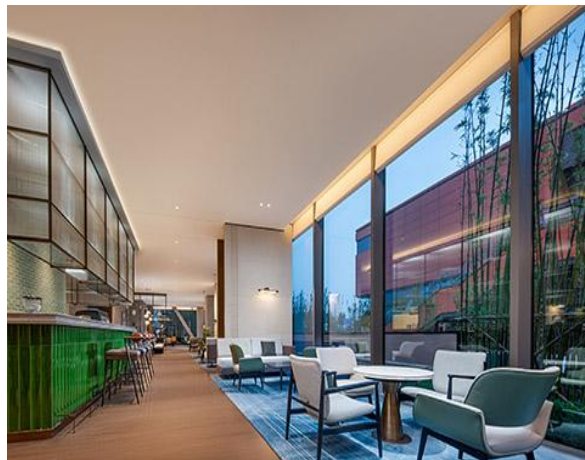


Saison Lounge

The lobby bar integrates coffee, afternoon tea and evening cocktail bar for guests to enjoy a relaxing time. The total seating capacity is 36.

1 Floor

Operation Hour
10: 30 – 00: 00



GRAND MERCURE

成都东部美爵酒店
CHENGDU EAST

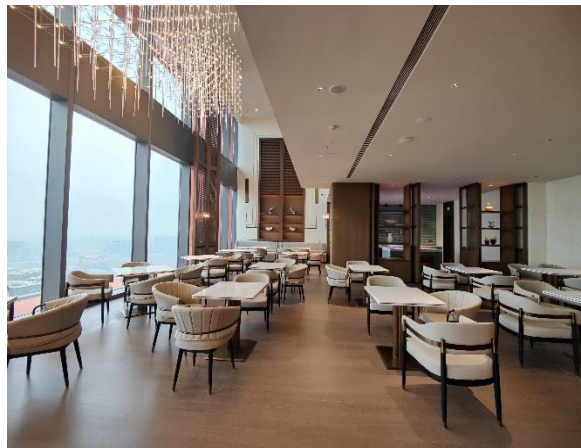
Executive Lounge

Executive Lounge

Executive lounge locate on the top floor, where guests can enjoy the dazzling intercity scenery of the Eastern New Area, with a distant view of Longquan Forest Mountain and a close view of the CBD. It is an unforgettable high-altitude check-in point.

Operation Hour

6: 30 – 23: 00



Gymnasium

The Gymnasium is located on the 5th floor of the hotel, with a professional Aerobic area, anaerobic area and yoga room.

With French Window, you can enjoy the scenery & fitness, at the same time, it will help you to remove the fatigue of the day, revitalize during exercise

Operation Hour
24 hours



GRAND MERCURE

成都东部美爵酒店
CHENGDU EAST

Local
Special



Linqi · Vitality City

There are more than 20 brands entered, Starbucks, Pizza Hut, KFC, Bawang Tea, Shu warrior and other well-known brands, are the first store in the core urban area of Chengdu Eastern New District, local well-known brands Lane eat fresh fish shop, Wang style Whole sheep banquet also here have done brand image upgrade, Wutong Tree tea House contains 15 independent private rooms which has enriched the supporting service level of Sancha TOD area, and provided a convenient entertainment life consumption scene for the office crowd in the new district and the surrounding citizens.

➤ 500m away from hotel, 2 minutes by walk



World Horticultural Exposition 2024

The 2024 Chengdu International Horticultural Expo will closely focus on the theme of "Park City Beautiful Habitat", and create a world flower and horticultural event with "characteristics of The Times, international level, Chinese elements, and Chengdu characteristics", with the main venue located in the eastern New District of Chengdu.

It held from April 26 to October 28, 2024, during which more than 2,000 colorful garden, flower, competition and cultural activities will be held at the venue.

➤ 3km away from hotel, 5 minutes by car



Maansgan Viewing Platform

It is the perfect location to overlook Sancha Lake, Tianfu International Airport New City Center Area and Longquan Mountain.

It mainly sets up the planning exhibition hall, sky viewing platform, the mountain forest footpath ,etc.

➤ 6km away from hotel,10 minutes by car



Longquan Forest Mountain Urban Park

Located in Eastern New Area

The highest point of the
Danjingshan ridge in the
Longquan Mountain

It looks like a “Sun God Bird”
while you overlooking from the
sky

Walk up the spiral wooden road
onto the viewing platform, you
can enjoy the complete beautiful
scene of the Sancha Lake

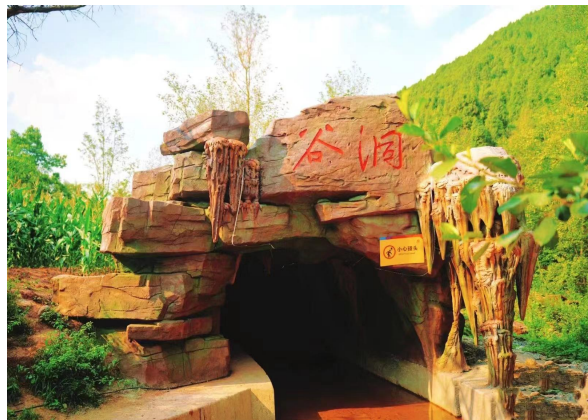
➤ 10km away from hotel, 18 minutes by car



Chengdu Danjingu Rafting

Located in the eastern New district Danjing Street feel the speed and passion, the vertical drop of 268 meters, ups and downs, you can experience the thrill of the "wave roller coaster", all the way down, about 2 hours, here is suitable for summer rafting, fun and exciting.

➤ 10km away from hotel, 20 minutes by car



Three Fish Lion Culture Village

Located in Jianyang city Caochi street.

The project is based on the cultural relics such as the stone lion in Qing Dynasty and the three fish with the first stone carving in Han Dynasty, combined with the geographical advantage of being close to Tianfu Airport for observing the take-off and landing of aircraft, and planting the stone carving culture, farming culture, champion culture and aviation culture.

The project is to build a research and experience center, intelligent sports interactive scene, wishing and praying square, ecological and organic restaurant, etc., to create a demonstration model of the integrated development of agriculture, commerce, culture and tourism.

➤ 10km away from hotel, 20 minutes by car



The New Hope Seed Paradise

Located in Jiajia Street in the Eastern New District, the park has created five theme areas: colorful farmland, family club animal star town, science popularization Adventure world happy lawn, and more than 1,000 natural installations in the large canteen of the old Chengdu in the 1980s, which are deeply integrated with the park site space.

➤ 20km away from hotel, 30 minutes by car



Tianfu International Circuit

Chengdu Tianfu International Circuit is one of the two key construction projects in Sichuan Province and Chengdu City, and it is also the only international second-class standard circuit in southwest China at this stage.

Located in the eastern New District of the airport, including Geely Academy, Tianfu International Circuit, Lotus car theme park, one of the three sub-projects, to create the most influential domestic automotive cultural industrial complex as the goal, the first "European (formula) + American (NASCAR)" the same scene and "track +" business model.

➤ 25km away from hotel, 30 minutes by car



Longma Lake Park

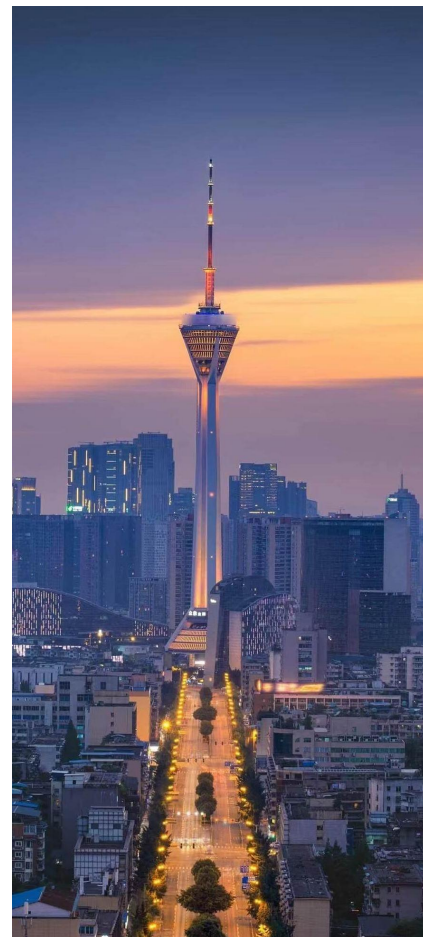
Located in the eastern New District of Jianzhou New City, covers an area of about 2400 mu, the lake area of 1050 mu. The park has implanted the cultural elements of Janzhou, laid out 18 special scenic spots on 4 islands, 15 km marathon greenway and driverless experience loop, and has a forest coverage rate of 90%.

➤ 24km away from hotel, 35 minutes by car



Chengdu Tourist Hotspot

Chengdu has Wuhou Temple, Yongling Mausoleum, Wangjiang Lou Qingyang Palace, Wenshu Courtyard, Ming Shu royal mausoleum Zhaojue Temple and other historical sites and cultural landscapes also have a giant panda base is an important habitat for giant pandas.



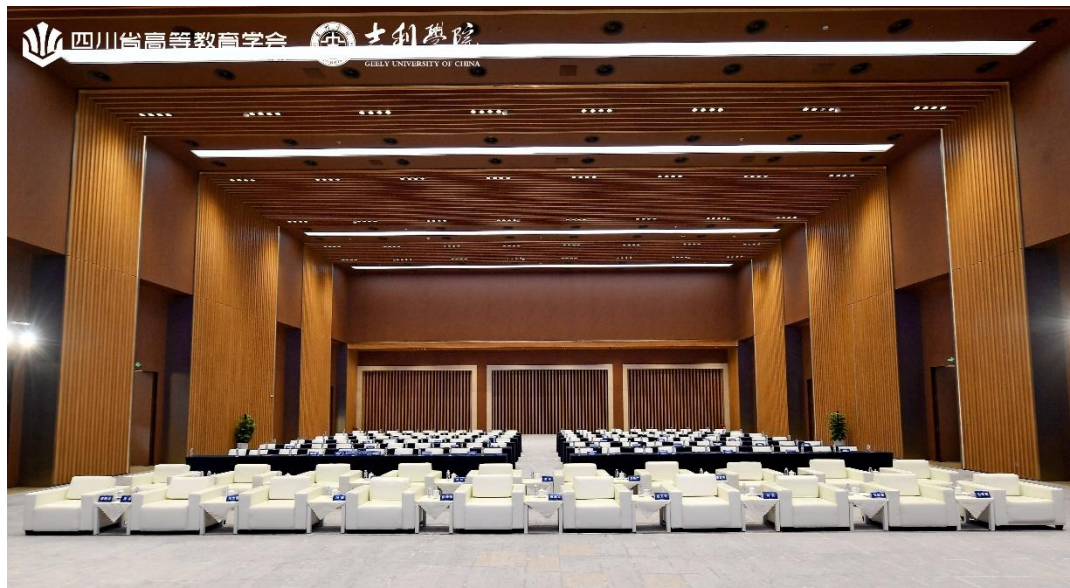
Case Reference



Case Reference



Case Reference



GRAND MERCURE

成都东部美爵酒店
CHENGDU EAST



THANK YOU

2576 Park Avenue, Western Financial Innovation Center, Sancha
Street Eastern New Area, Chengdu, Sichuan, P.R. China, 641419

T +86 28 6523 6666 all.accor.com

Dierictor of Sales : Mable

Tel.: + 86 1388 2188 993